



**District 56**  
**Proposed Alignment 2020 - 2021**

Harold Eaton, DTM  
Alignment Committee Chair



Kathryn Kest, DTM,  
DD



Rose Bradford,  
DTM, PQD



Jo Idoux,  
DTM, CGD



Pam  
McCown,  
DTM, Advisor



Eric Coy,  
Advisor



Harold Eaton,  
DTM, Cmte Chair

# THE COMMITTEE

Kathryn Kest –DD, Member at Large

Rose Bradford – PQD, Advisor

Jo Idous – CGD, Advisor

Pam McCown – Advisor

Eric Coy - Advisor

Harold Eaton -Alignment Committee Chair

	Division Representatives
L	Frank McLaurin
M	Max Lopez
N	Troy Rockett
O	Chandra Munagavalasa
P	Stephanie Loving
Q	Alvin Watts
R	Cindy Petrash



Frank McLaurin



Stephanie Loving



Alvin Watts



Cynthia Petrash



Max Lopez



Troy Rockett



Chandra  
Munagavalasa

# THE GUIDELINES

## Toastmasters International World HQ Guidelines (Summarized)



- ✓ Geographically align clubs within areas and divisions
  - ✓ Plan for possible growth and anticipated loss
  - ✓ Optimize the equitable distribution of active clubs between areas and divisions
- 
- ✓ Each division must have a minimum of three (3) areas
  - ✓ Each area must have a minimum of four (4) clubs and no more than six (6) clubs

# THE STATUS



**Suspended Club** = Paperwork entered to suspend charter (Not counted towards Area alignment requirements)

**Ineligible Club** = 0-2 Members  
**Low Club** = 3-7 Members

**Active Club** = 8+ Members

# District 56 Proposed Overview

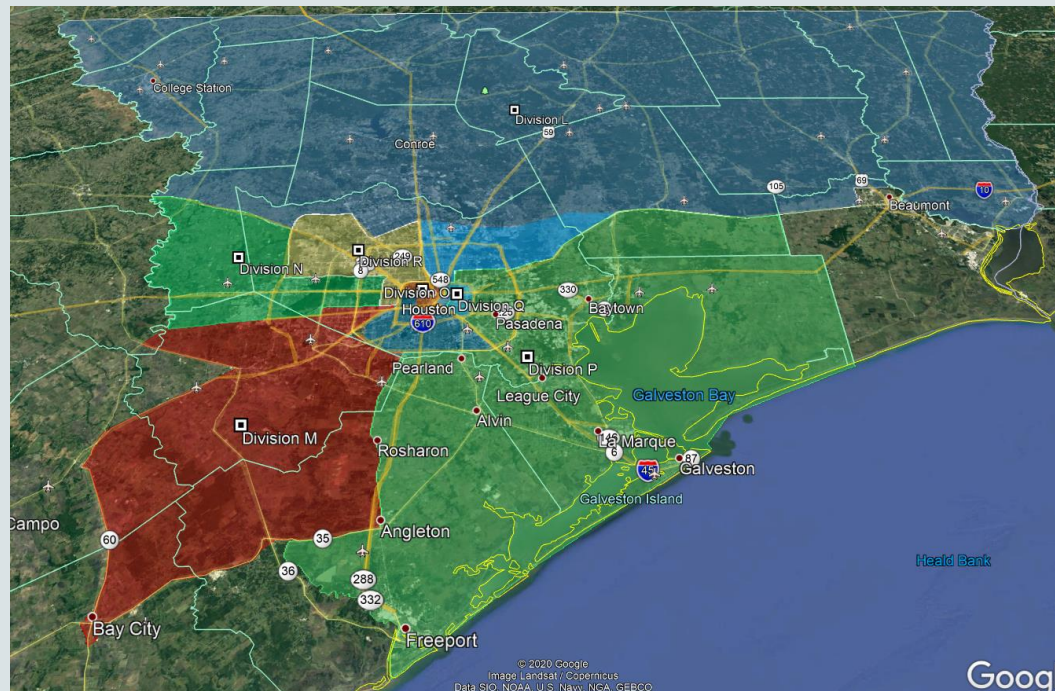
## District 56 Performance Report

<b>Active Clubs</b>
<b>206</b>

<b>Total Paid Clubs as of 2/29/2020</b>	<b>199</b>
Ineligible Clubs	+6
Low Clubs	+1
<b>Total Active Clubs</b>	<b>206</b>
Suspended Clubs	+7
Total Clubs listed in Perf Reports	213

# District 56

- Seven Divisions
- 41 Area



# THE HIGHLIGHTS

## Committee Recommendations

### Divisions

- ✓ Keep the 7 current divisions
- ✓ Modify Division L, O & P boundaries to absorb clubs from the old Q53 area.

### Areas

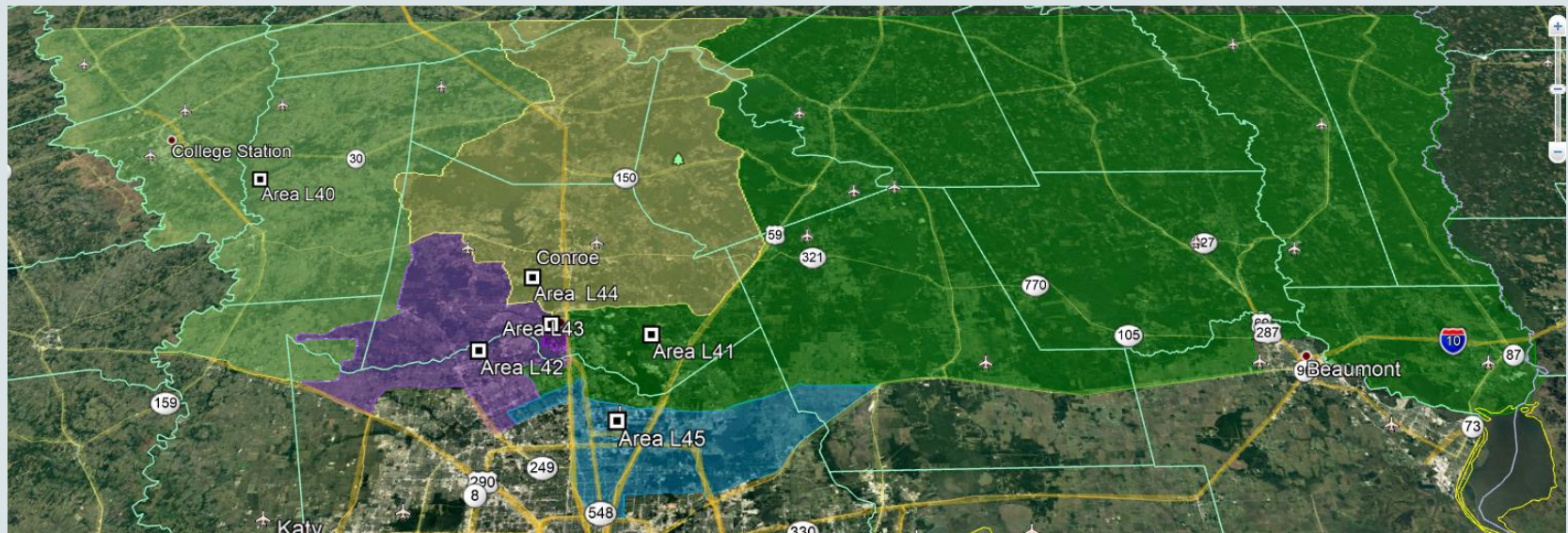
- ✓ Add 3 new areas (L45, O15 ,R65) and remove old Q53. The area total will change from 39 to 41.

# Proposed Club Change Summary

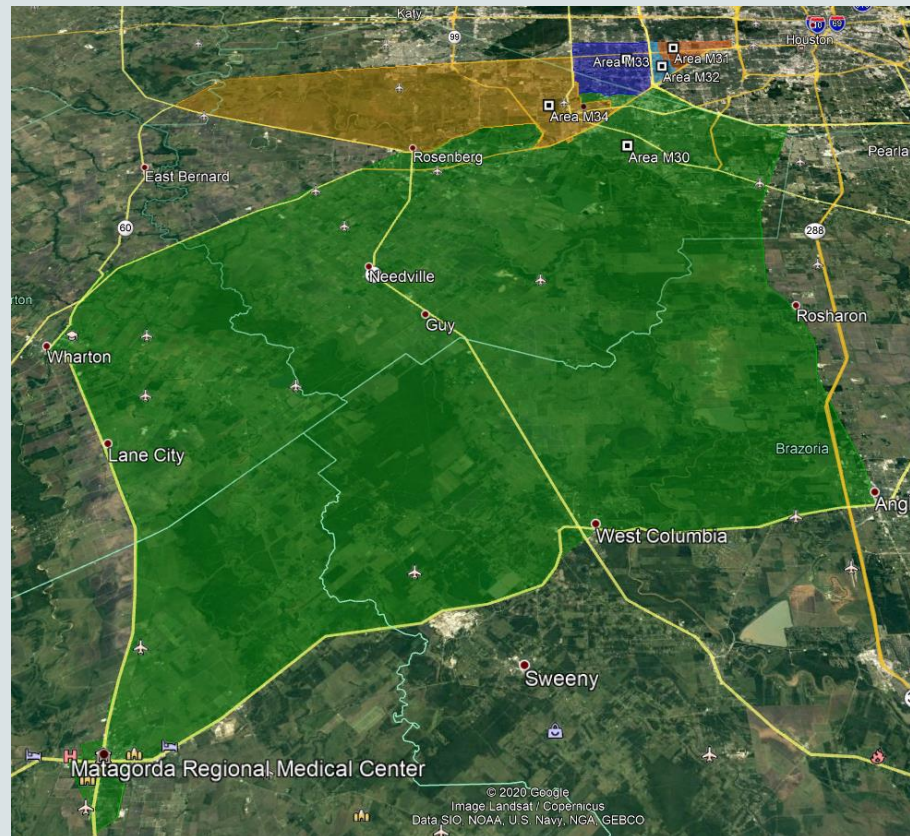
	Clubs by Div	
	Current Clubs	Planned Clubs
L	27	30
M	25	26
N	35	32
O	29	28
P	29	29
Q	31	28
R	30	33
Suspended	7	7
Total	213	213



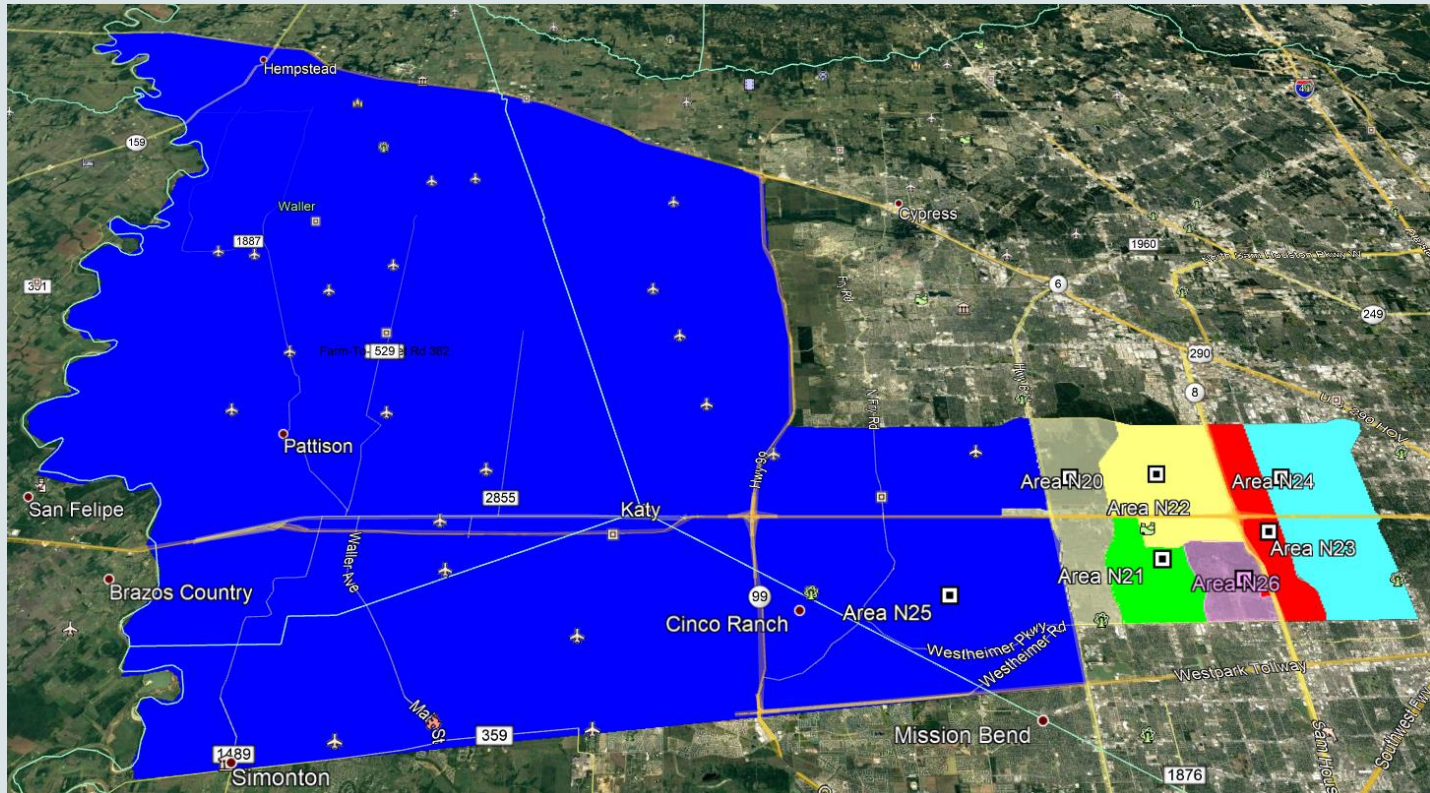
# Proposed Division L Areas



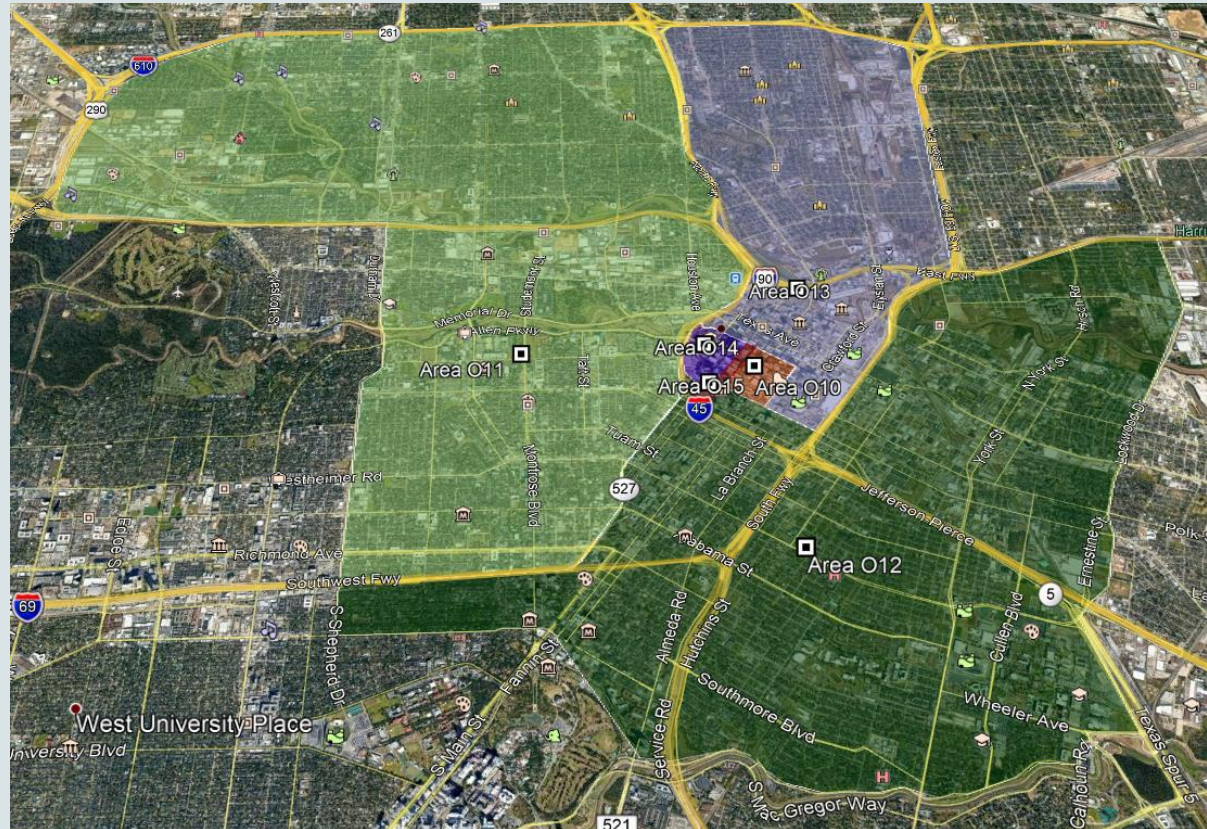
# Proposed Division M Areas





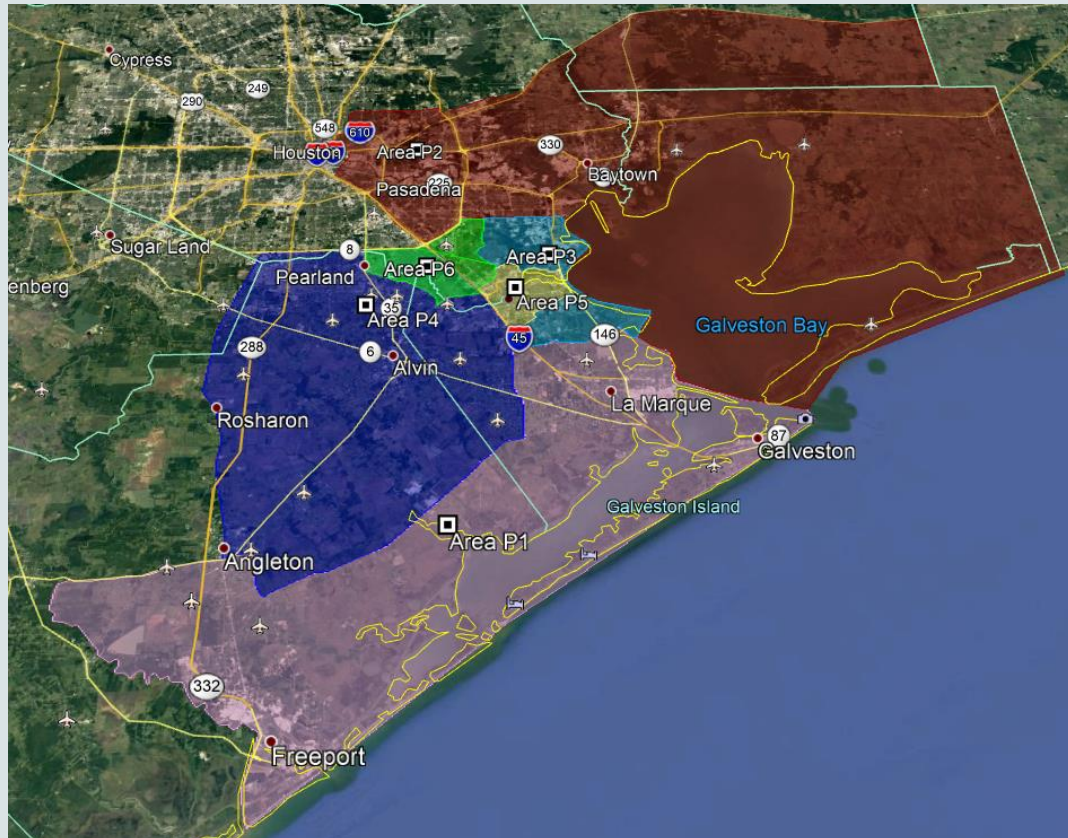


# Proposed Division O Areas

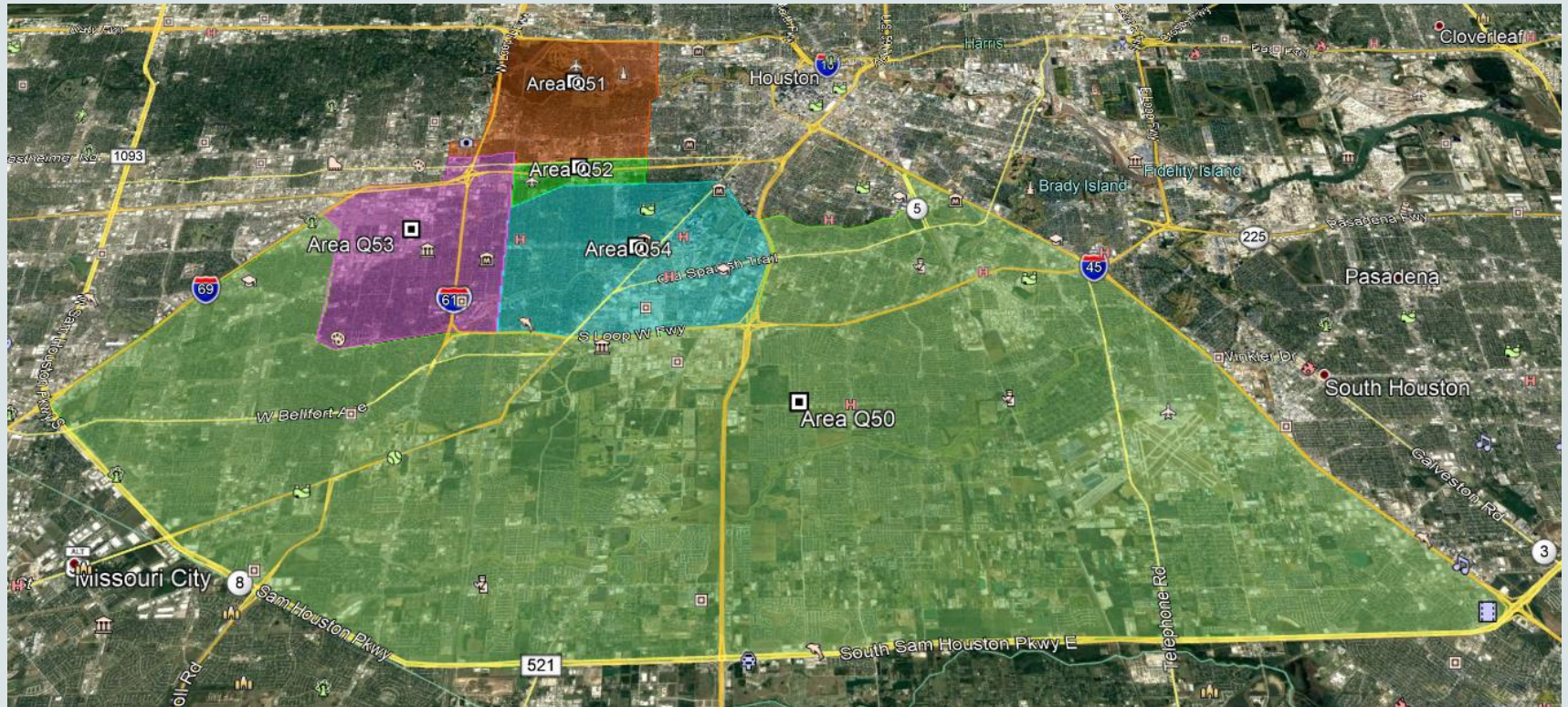




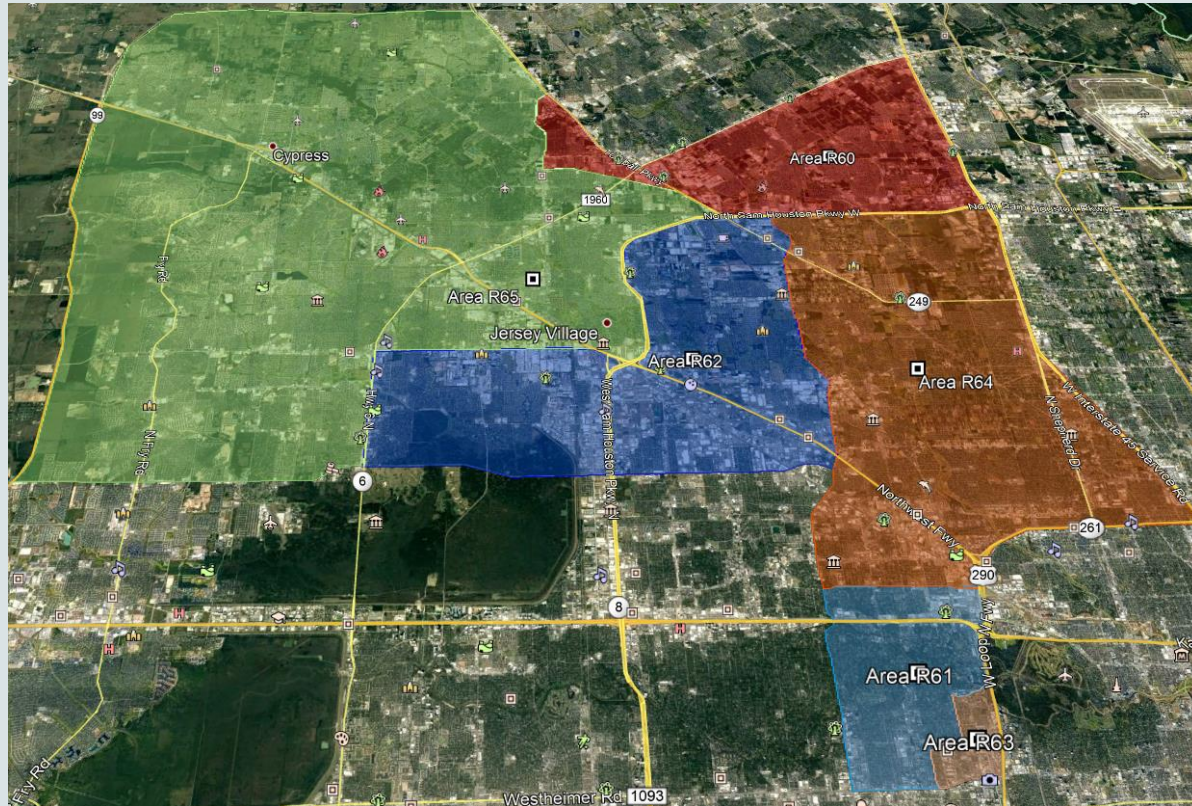
# Proposed Division P Areas



# Proposed Division Q Areas









**District 56**  
**Proposed Alignment 2020 - 2021**

Conclusion

Full Report on [TMD56.org](https://TMD56.org)